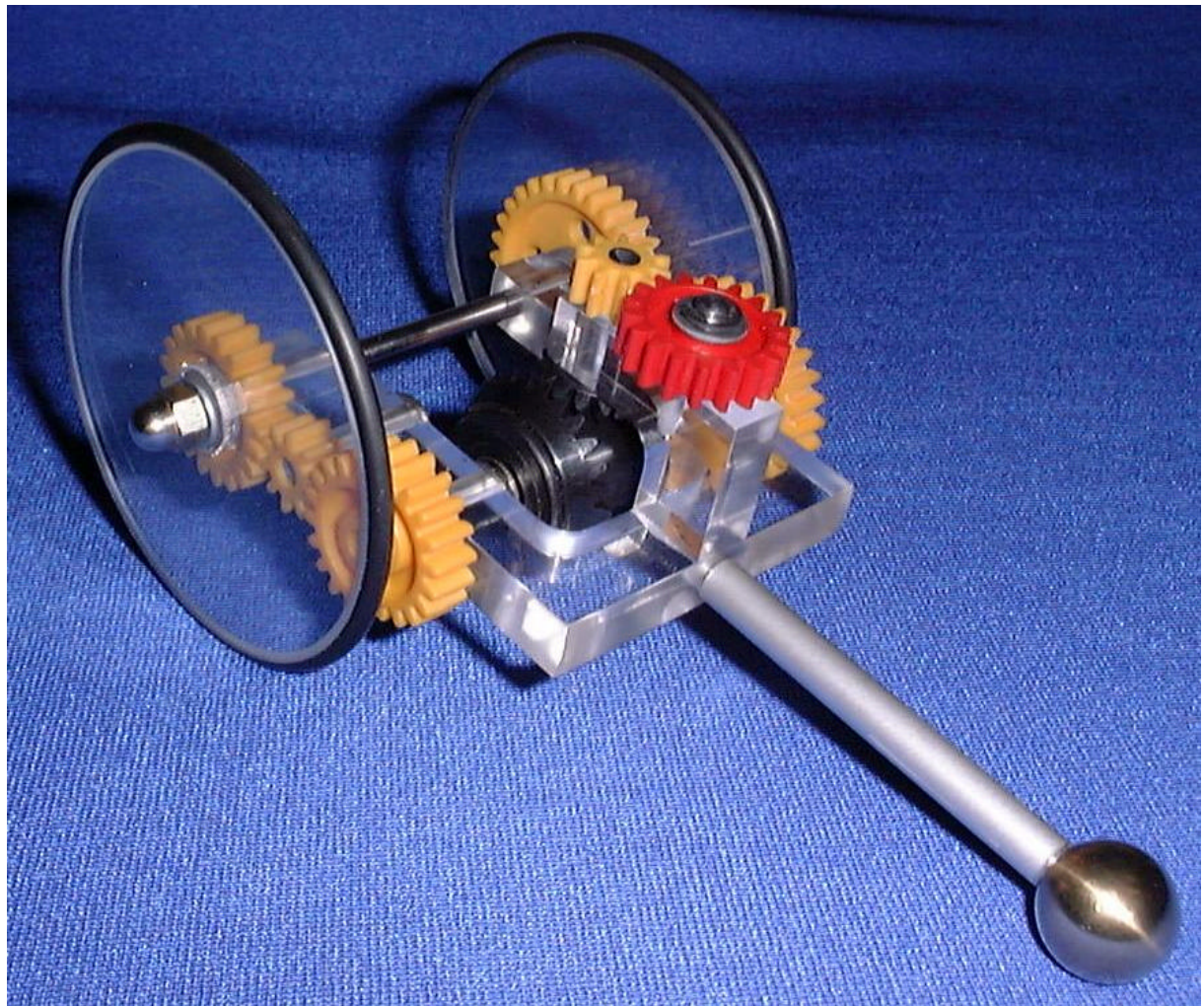
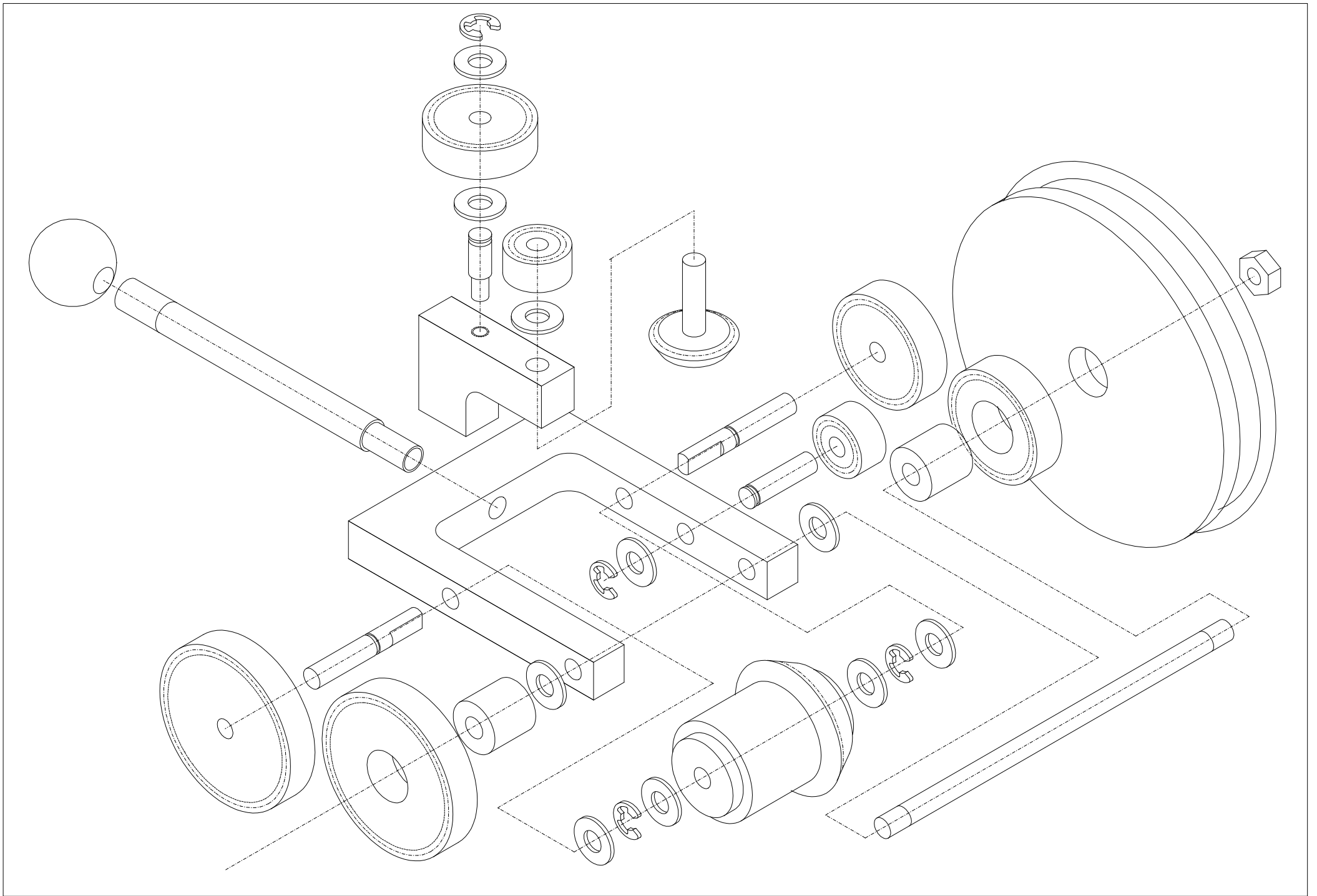


# South Pointing Chariot

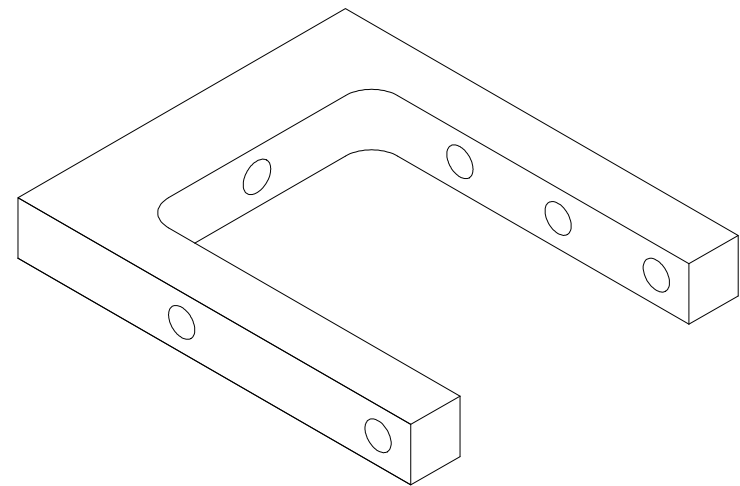
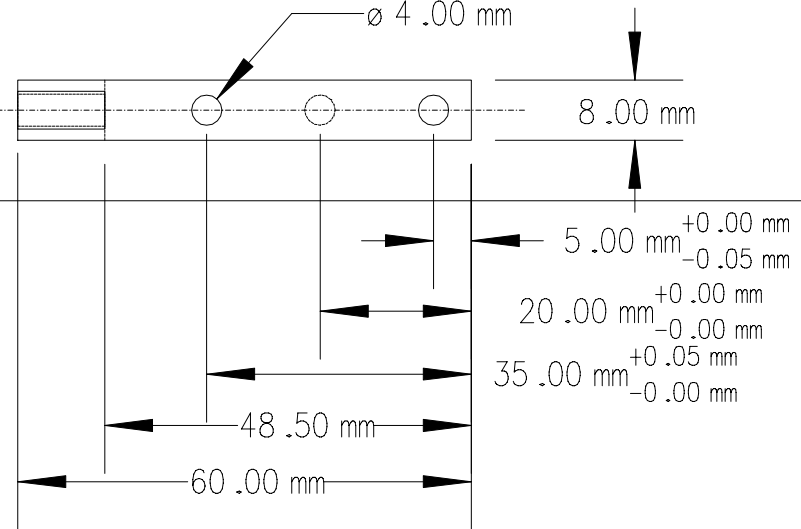
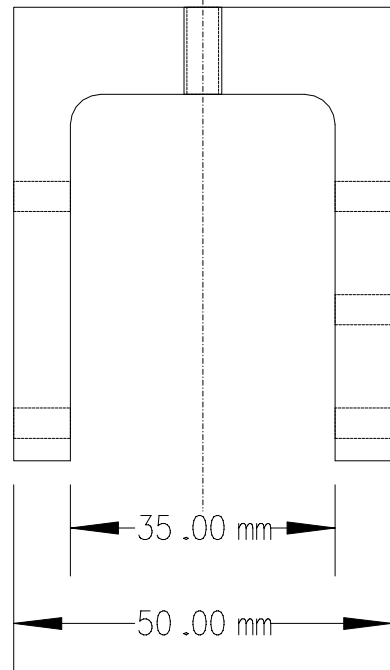
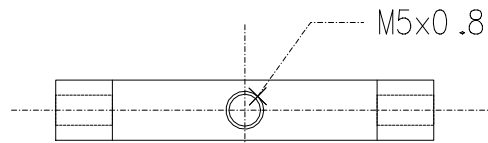
## Type ODTS II



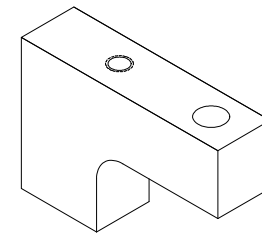
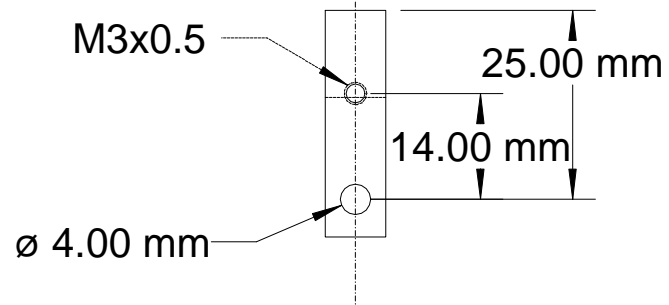
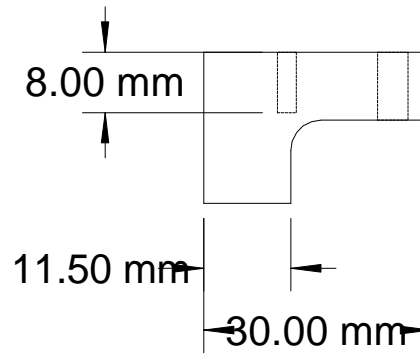
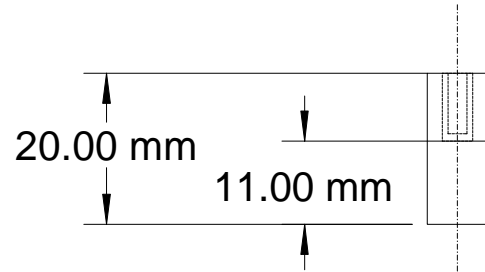


# Parts List South Pointing Chariot "ODTS2"

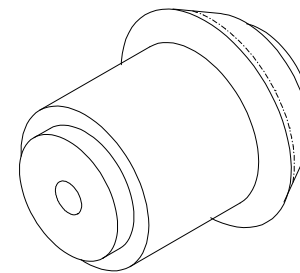
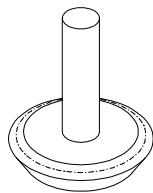
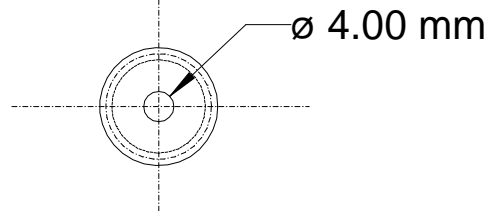
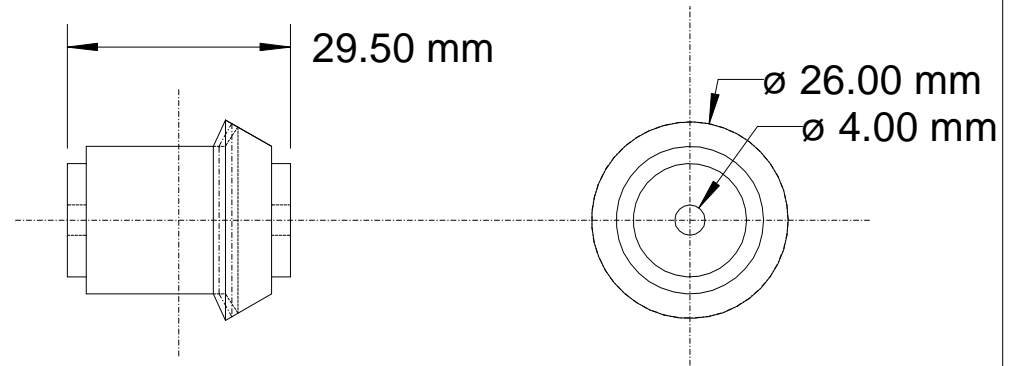
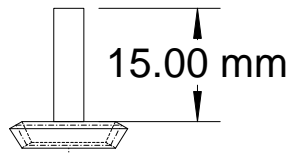
Reference	Required	Name	Source	Drawing
P1	1	Chassis	Acryl Sheet 8mm	Chassis
P2	1	Pointer Bearing	Acryl Sheet 8mm	Bearing
A1	1	Differential (k = 1.076)	Fischer Technik (Knobloch) 1x 31411 2x 35982 2x 31412 2x 31413	Differential
P3	1	Pointer Bevel Gear	Fischer Technik 31414	Differential
P4	1	Drawbar	Aluminium Rod 6mm	Drawbar
P5	2	Hub	Polyethylen Rod 12mm	Hub
P6	2	Road Wheel	Acryl Sheet 4mm	Wheel
P7	1	Spur Gear Z30 Modul 1	Conrad 237663	Gears
P8	1	Spur Gear Z30 Modul 1	Conrad 237663	Gears
P9	1	Spur Gear Z20 Modul 1	Conrad 237663	Gears
P10	1	Spur Gear Z20 Modul 1	Conrad 237663	Gears
P11	1	Spur Gear Z18 Modul 1	Opitec 840.125	Gears
P12	1	Spur Gear Z10 Modul 1	Conrad 237663	Gears
P13	1	Spur Gear Z10 Modul 1	Conrad 237663	Gears
P14	1	Main Axle	Drill Rod 4mm	Shafts
P15	2	Differential Stub Axle	Drill Rod 4mm	Shafts
P16	1	Idle Stub Axle	Drill Rod 4mm	Shafts
P17	1	Pointer Stub Axle	Drill Rod 4mm	Shafts
P18	2	Tire	Oring 64x3 (Sinzker)	Extras
P19	2	Wheel Nut	Locknut M4	Extras
P20	10	Washer	Steel Washer 4.2	Extras
P21	4	Retaining Ring	Circlip 4	Extras
P22	1	Handle	Brass Ball	Extras



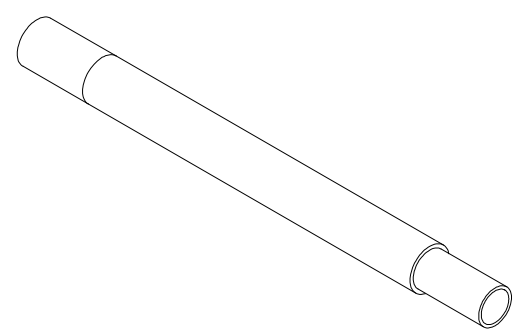
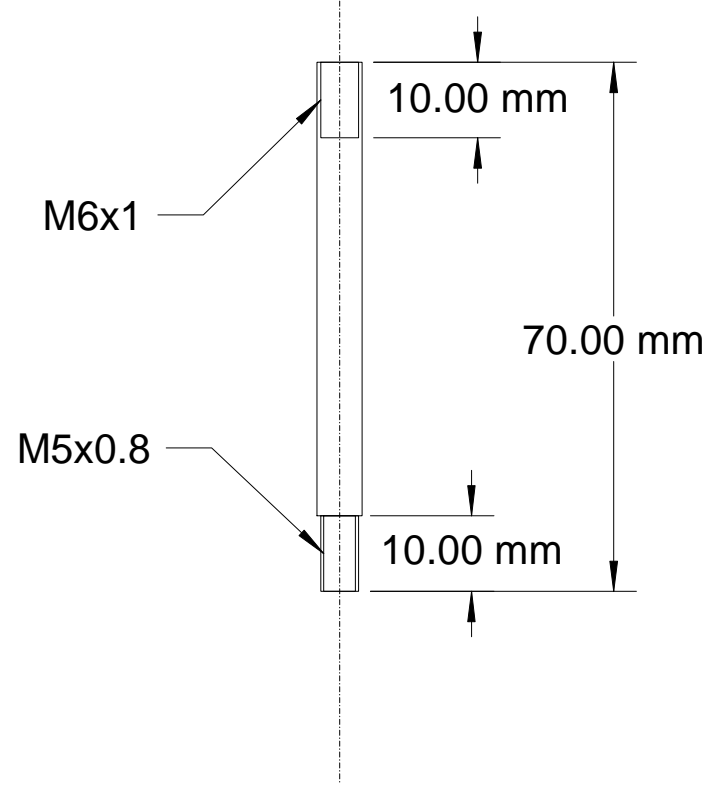
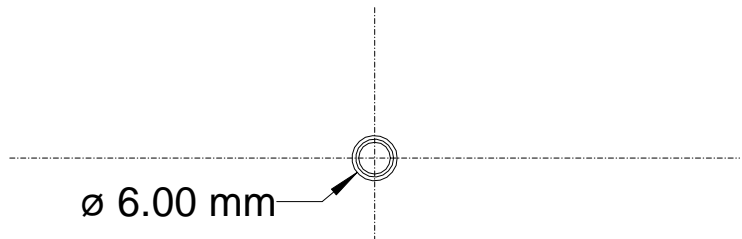
**Chassis**



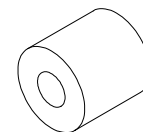
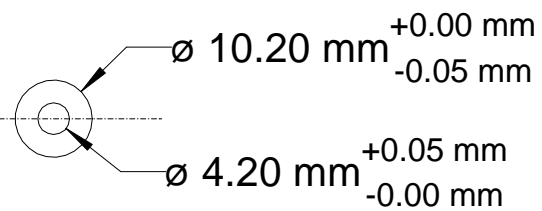
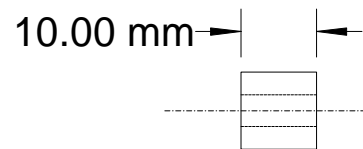
Pointer Bearing



Differential

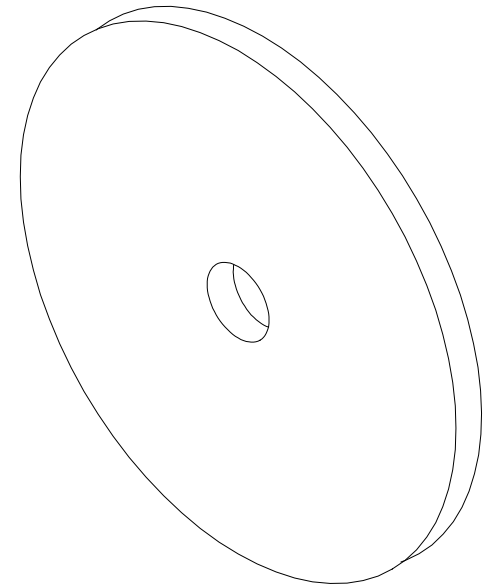
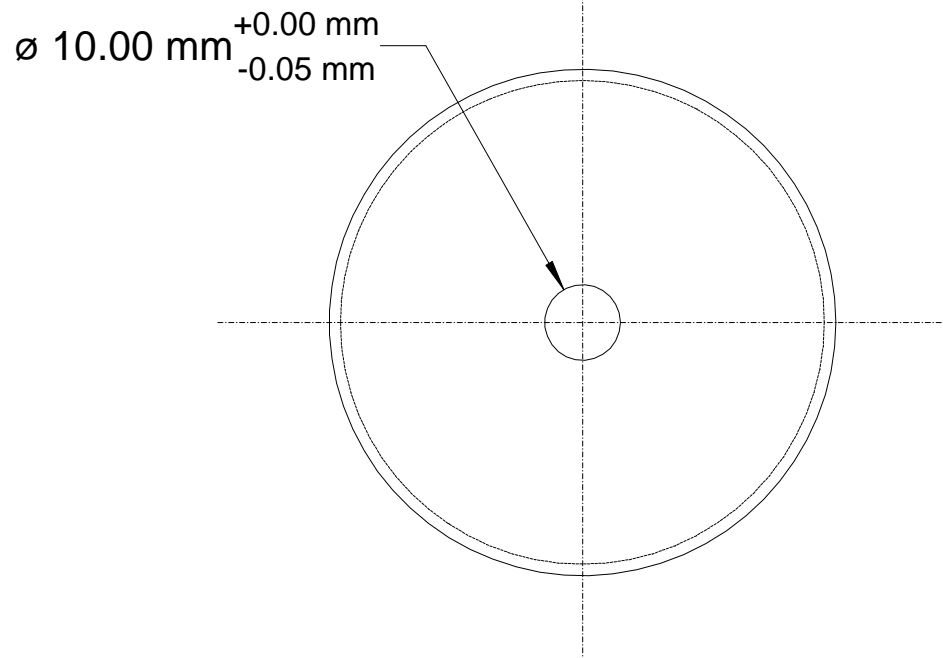
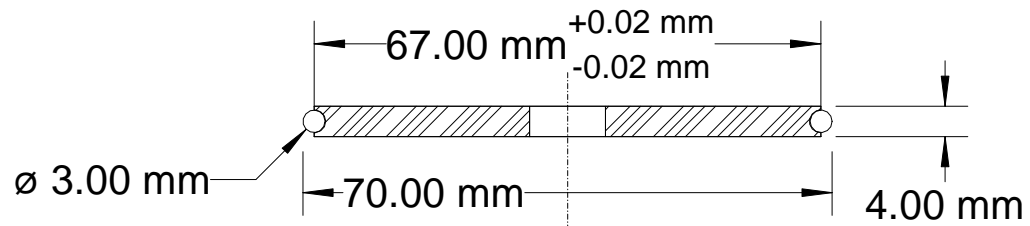


**Drawbar**

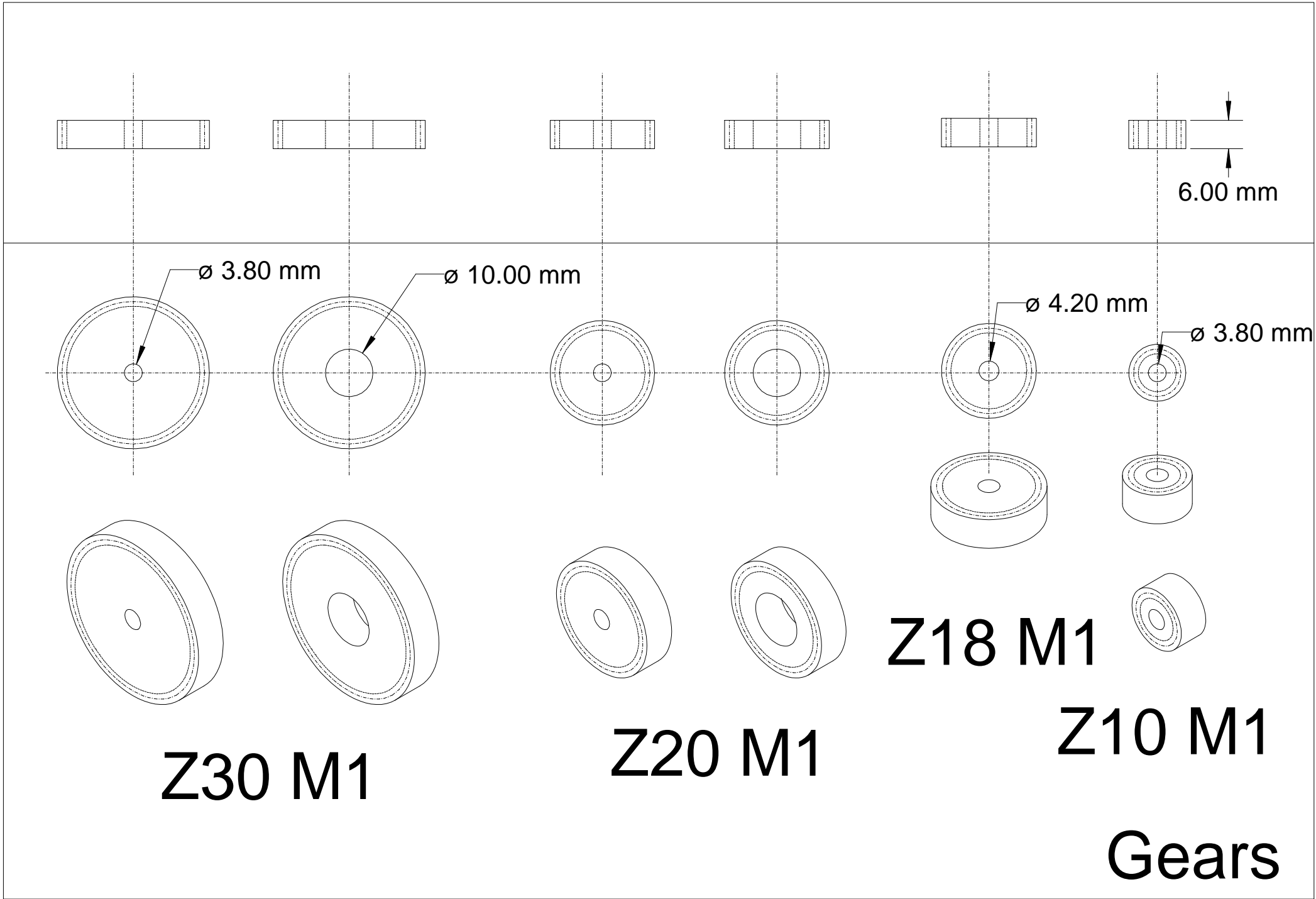


Hub

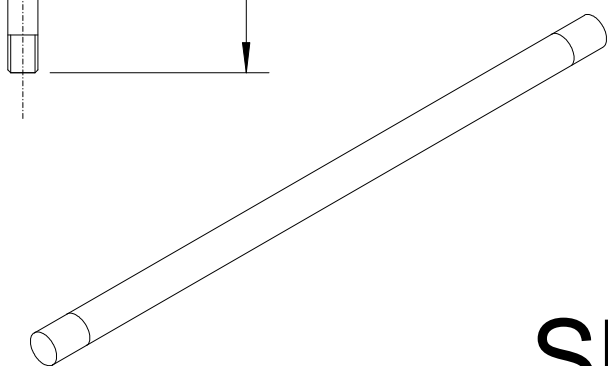
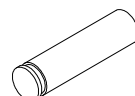
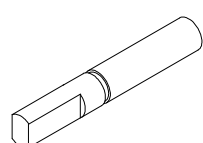
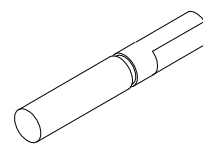
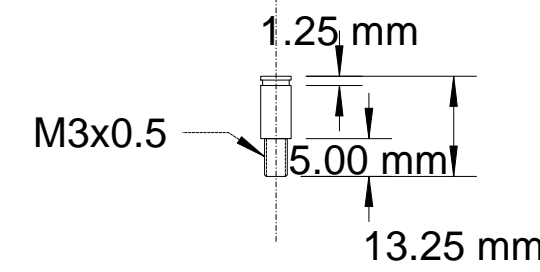
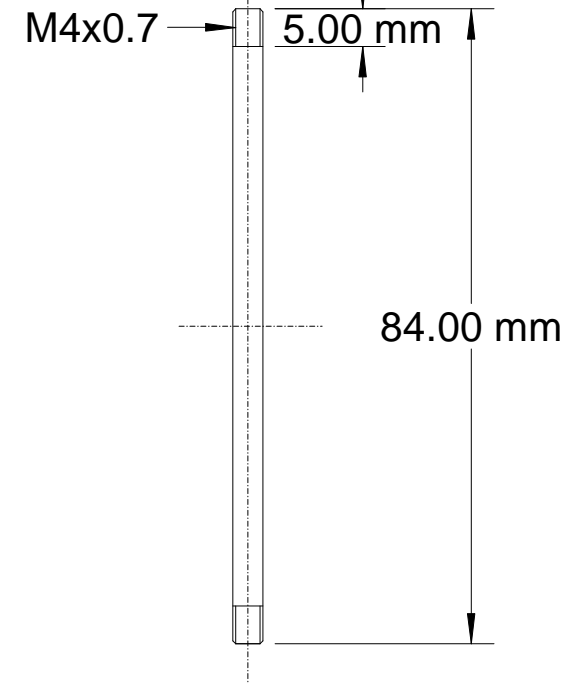
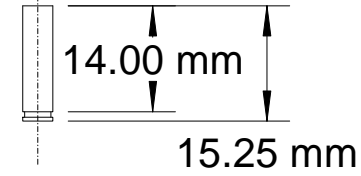
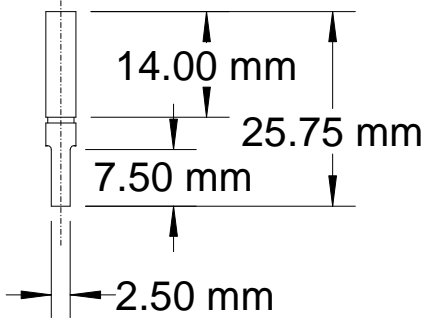




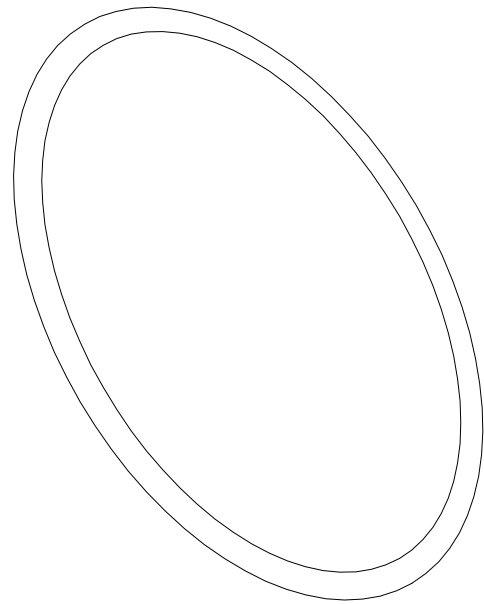
Wheel



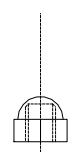
Ø 4.00 mm      Ø 4.00 mm      Ø 4.00 mm      Ø 4.00 mm



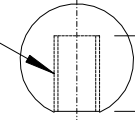
Shafts



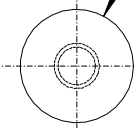
Oring 64x3



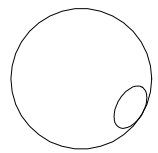
M6x1.0



10.00 mm



∅ 15.00 mm



M4

Extras